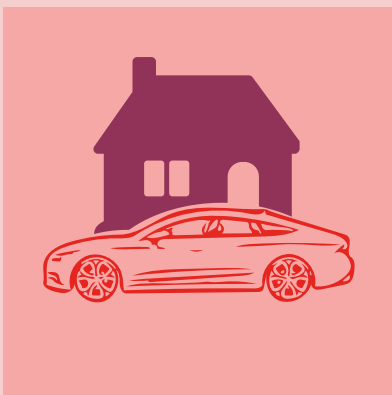
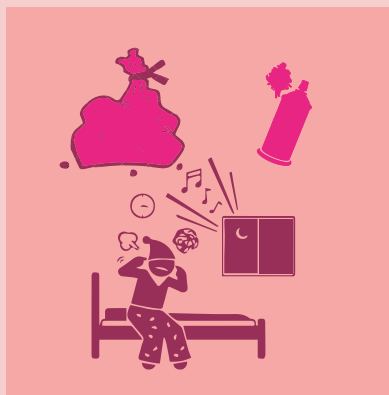


Cuckooing is a form of crime in which drug dealers take over the home of a vulnerable person in order to use it as a base for drug dealing

The following signs may indicate that an individual or family's property has been cuckooed



New vehicles regularly parking or remaining outside the property



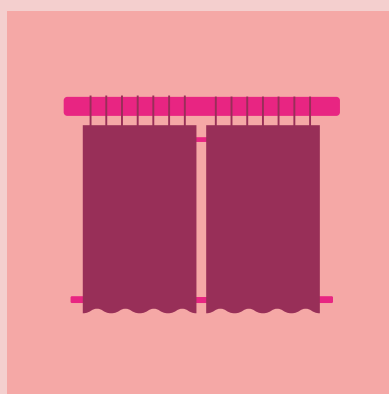
An increase in anti-social behaviour



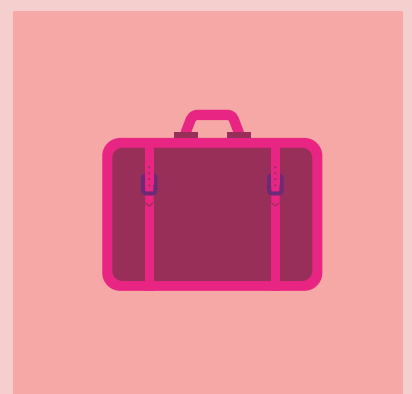
Restricting access to parts of the property to friends or professionals



An increase in the number of people visiting the property



Curtains or blinds always being closed



Individuals or families staying away while unknown individuals remain

CONTACT:

Your local **Safeguarding Adults Board**,
Police 101 or **Crimestoppers 0800 555 111**



**WEST MIDLANDS
REGIONAL ADULT
SAFEGUARDING
LEADS**
DEVELOPING POLICIES AND
PRACTICE ACROSS THE REGION