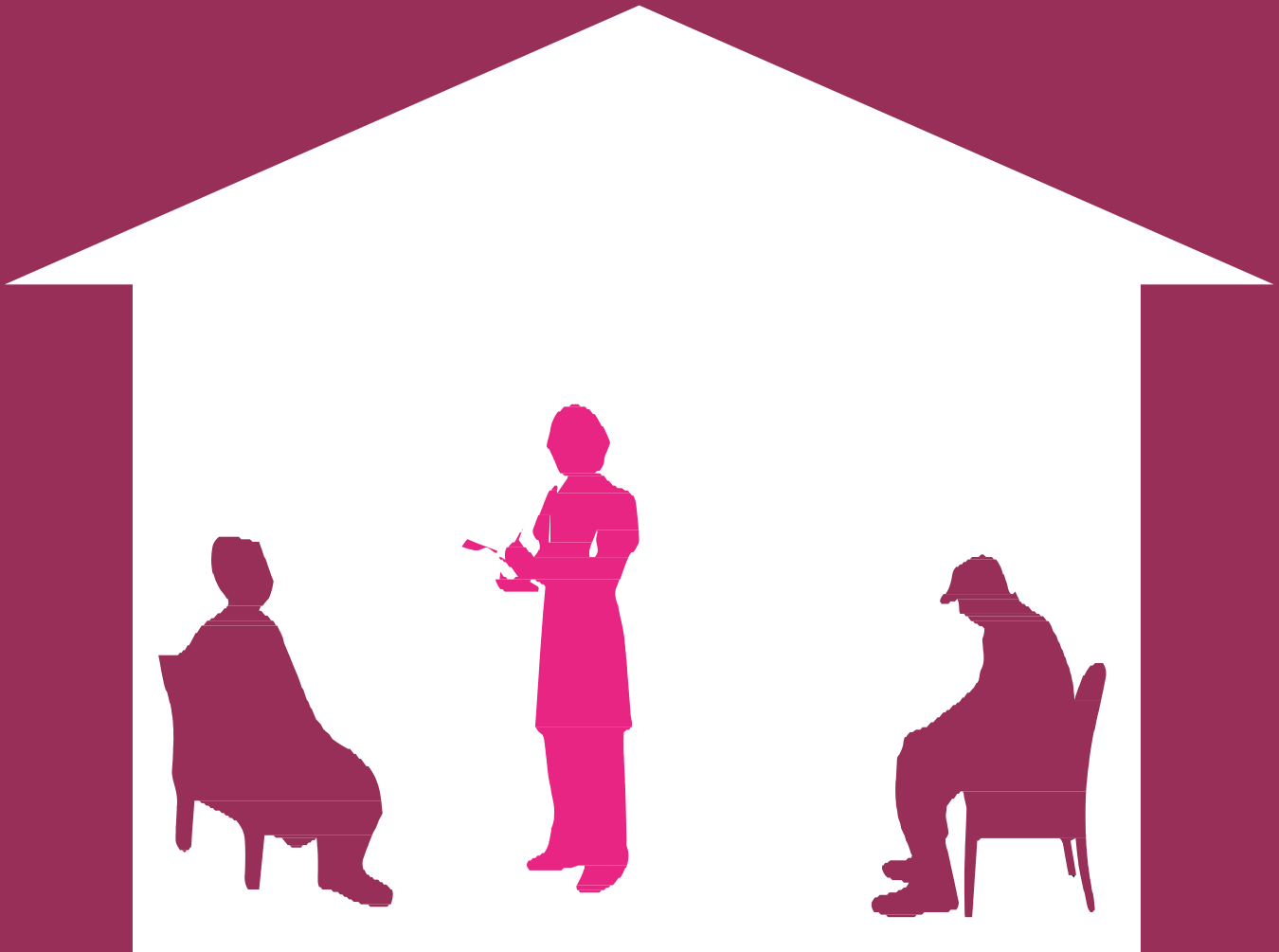


# Organisational Abuse

This can include neglect, poor care practices or the regime of carers within an organisation or specific care setting



**“I don’t want to get ready for bed at 5pm”**

If a person who has care and support needs is experiencing organisational abuse, contact:

- **Your local Safeguarding Adults Board**
- **Crimestoppers** on **0800 555 111**
- **Police** on **101**



WEST MIDLANDS  
**REGIONAL ADULT  
SAFEGUARDING  
LEADS**  
DEVELOPING POLICIES AND  
PRACTICE ACROSS THE REGION