

Warwickshire Safeguarding

Annual Report
2019-2020



Warwickshire
Safeguarding



Introduction by Independent Chair & Scrutineer

Warwickshire Safeguarding came into effect in September 2019 and I am very pleased to introduce this year's annual report which focuses on our New Partnership Arrangements for Safeguarding Children and Adults.

The Warwickshire model replaces the previous Warwickshire Safeguarding Children Board (WSCB) and Warwickshire Safeguarding Adults Board (WSAB) structures with:

- A Safeguarding Executive Board for adults and children.
- A Warwickshire Safeguarding Children's Partnership and a Warwickshire Safeguarding Adults Partnership.
- Quality Learning and Improvement Hubs

Much of this year has been spent developing a culture that supports the collaborative working arrangements needed to safeguard Warwickshire's vulnerable adults and children. It is encouraging to see the development of opportunities for dialogue, growing mutual respect between all organisations, and an increased understanding of each other's roles and responsibilities.

At the time of writing this report Warwickshire, in common with the rest of the country, is managing the impact of the Coronavirus pandemic. All services have had to adapt to ensure services are delivered safely and continue to offer support whilst reducing the risk of COVID-19 transmission. Working through a pandemic will inevitably form an important part of next year's annual report, and the legacy of the pandemic particularly in terms of mental illness, isolation, wellbeing, and safeguarding will be fully explored. In the coming months attention needs to be paid to developing commissioning intentions that reflect these new needs, but for now I would like to thank everyone involved in maintaining high standards of professional practice and care.

With new reforms and legislation transforming the safeguarding landscape, there is a distinct focus not only around protection but also the prevention agenda, exploitation and contextual safeguarding. Warwickshire Safeguarding partners have established effective working practices in these areas and progress has been made in key areas including audit, communicating & information sharing, and challenge & scrutiny.



During the period of this report Warwickshire Safeguarding has seen an increase in the number of referrals for safeguarding reviews from across the partnership in respect of both adults and children. This increase is seen as positive and demonstrates a growing confidence in professionals and a willingness to consider circumstances that might point to abuse or neglect. I would like to commend the business team for their work in developing a wide range of tools to support learning from reviews. The seven-minute briefings and lessons learned briefings have been particularly well received.

The coming year is likely to be challenging. The risk of a resurgence of coronavirus is increasingly real. Warwickshire Partnership has developed a good foundation on which to collectively support each other when ways of working become more challenging and complex –and society is infinitely more complex. The partnership knows itself better and acknowledges that more needs to be done in every area, however it has achieved a lot in its first year and should be congratulated.



Elaine Coleridge Smith
Independent Chair & Scrutineer
Warwickshire Safeguarding





Key Facts (Adults)



3144

CONCERNS RECEIVED

(3483 in 2018/19)



298

SECTION 42 ENQUIRIES

(192 in 2018/19)

Section 42 Enquiries – Top 3 primary support reasons:

- Physical Support
- Mental Health
- Learning Disability

Top 3 Types of Abuse for concluded Section 42 Enquiries

Financial or Material
Abuse

36.29%

Physical
Abuse

14.97%

Psychological
Abuse

14.21%

Concluded Section 42 Enquiries – Top 2 locations of risks:

- Own Home
- In the community (excluding community services)

Asked what
outcome they want

64.79%

(71.24% in 2018/19)

Risk Reduced or
Removed

68.9%

(81.62% in 2018/19)

Outcome Fully or
Partially Met

94.94%

(94.07% in 2018/19)

22

Safeguarding
enquiries involved
strangers who were
unknown to the
victim

231

Concluded
safeguarding enquiries
listed the source of risk
as an individual known
to the victim

31

Safeguarding
allegations
involved abuse
by social care
staff

Individuals involved in Safeguarding Concerns

966 Male

1482 Female

*5 Unknown

DEMOGRAPHICS

111 Aged 95+

557 Aged 85-94

553 Aged 75-84

336 Aged 65-74

886 Aged 18-64

*10 Unknown

16 Other Ethnic Group

20 Black/African/Caribbean/Black British

59 Asian/Asian British

15 Mixed/Multiple

1908 White



*435 Undeclared/Not Known



Key Facts (Children)



Warwickshire has a resident population of approximately **117,720** children ages **0-17 years**, who make up around a fifth of the total population of the county

18,081
CONTACTS RECEIVED
(19,878 in 2018/19)



5,046
SAFEGUARDING REFERRALS RECEIVED
(5,351 in 2018/19)

- **754** Looked After Children (722 in 2018/19)
- **673** LAC Missing Episodes (822 in 2018/19)
- **120** Missing Looked After Children (128 in 2018/19)
- **295** Children subject to a CP Plan (345 in 2018/19)

Open to Child Sexual
Exploitation Team

68

(59 in 2018/19)

Domestic Violence most
prevalent risk factor in
children

2728

(2269 in 2018/19)

Referrals received for
children with a disability

1.2%

(1.3% in 2018/19)

Largest proportion of children subject to a child protection plan were aged **0 to 5**. This is a change to the previous year when the largest cohort was aged **10 to 15**.

In January 2020, **19%** of the school population were classified as being of an ethnic group other than White British, the largest minority ethnic group being 'Any Other White Background' (**6%**) followed by 'Indian' (**4%**).

Top 3 types of abuse for children subject to Child Protection Plans:

Emotional Abuse

46%

Neglect

25%

Multiple

22%

Referrals to Children's Social Care

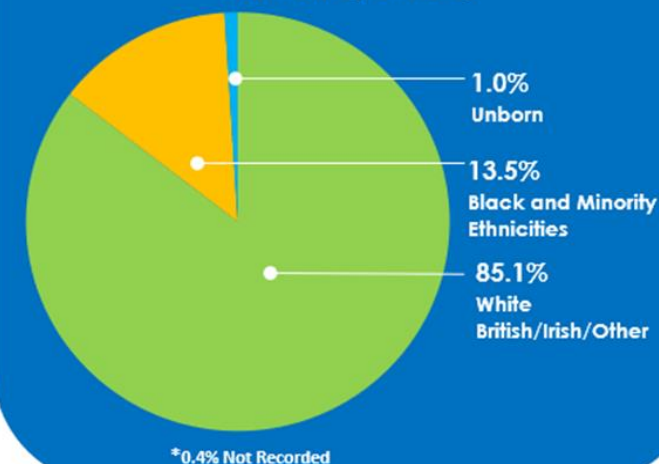
25.1%

Received from Police

22.8%

Received from Schools

Referrals by Ethnicity





Governance Arrangements

Warwickshire Safeguarding replaced both former safeguarding partnerships (Warwickshire Safeguarding Children's Board (WSCB) and Warwickshire Safeguarding Adults Board (WSAB)) with effect from 29th September 2019 and established its new governance arrangements to combine the responsibility for safeguarding children and adults under the guidance of Working Together 2018 and the Care Act 2014.

The illustration below provides details of this new structure:





During the course of 2019-2020 the newly formed Warwickshire Safeguarding Executive Board continued to meet on a monthly basis to guide and approve new ways of partnership working and discharging their safeguarding duties. The Warwickshire Safeguarding Children's Partnership Group and Warwickshire Safeguarding Adult's Partnership Group held two meetings and were engaged to participate in the implementation of the new quality assurance framework and evaluation of findings from assurance activities. The Subgroups continued to meet on a regular basis to drive the agenda against each of their remits in respect of safeguarding adults, children, young people and families. The Prevention & Early Intervention Subgroup is yet to be established and work is underway to develop a clear remit for this subgroup, which builds on other prevention and early intervention activities underway across other partnership groups operating across the county.

Strategic Priorities

Warwickshire Safeguarding's new strategic priorities were agreed as part of the consultation and engagement on the new partnership arrangements replacing the two former safeguarding boards (Warwickshire Safeguarding Children's Board and Warwickshire Safeguarding Adults Board). The focus of the partnership's work has centred around these priorities which are overarching across both adults and children's safeguarding. Warwickshire Safeguarding will seek to gain assurances that safeguarding arrangements across the partnership are effective in helping to keep children, young people and adults with care and support needs safe from abuse and neglect and achieving positive outcomes:

Strategic Priority	What we did..
Effective Safeguarding	<ul style="list-style-type: none">Warwickshire introduced a new integrated governance model for safeguarding children and adults that allows the partnership to develop a family focused approach to working across the wider policy and partnership landscape.Introduced new Pathway to Change model to develop shared language and understanding with families and partners agencies, which is in line with the Restorative Practice approach. This approach encourages practitioners to build relationships which should be child centred but also engage and work with the whole family. Recognising that to achieve and sustain change, parents need to be supported to care for their children. Practitioners need to provide practical support and recognise that families are the experts in their lives and their strengths and goals will be central to our approach.



- Delivered a series of workshops to help broaden awareness and understanding of the new 'Pathway to Change' model across the wider partnership.
- The MASH introduced new ways to manage incoming demand as part of the MASH Re-design, including the integration of improved advice/information and early support pathways.
- Ongoing work with partner agencies to ensure consistent understanding and application of thresholds, pathways for support and interventions, including improving the quality of referrals.
- Warwickshire health services have continued to work closely with partners to both identify children , young people and adults at risk and contribute to any ongoing support to reduce harm.
- Warwickshire Police established a new Child Abuse, Trafficking and Exploitation Team Working with statutory and voluntary agencies to:
 - *Manage risk to children*
 - *Investigate offences and prosecute offenders*
 - *Safeguard and protect children and young people from abuse and exploitation*
 - *Work with the Missing team and partners to identify links between missing young people, exploitation and abuse.*
- Warwickshire Police continued to work with partners, to seek to identify and investigate incidents of Child Sexual Exploitation and Child Criminal Exploitation which support the development and introduction of new practices to prevent exploitation and develop the links with missing children by increasing early identification of those most at risk of harm.
- The Missing team, working in partnership with Warwickshire County Council Missing Practitioners continued to work together to identify children who are at risk of going missing and manage those who have multiple missing episodes to reduce risk to them. In Warwickshire last year, 113 children went missing repeatedly, accounting for 643 missing children investigations. The Missing team worked closely with partners to:
 - *Gather intelligence in relation to the missing episode*
 - *Reduce the duration of the episode*
 - *Provide a return home interview for the child to increase knowledge of the causes of the episode*
 - *Share information between agencies*
- A Statutory & Major Crime Review Unit has been established to:
 - *oversee Statutory reviews (DHR, Local Child Safeguarding Practice reviews, Safeguarding Adult reviews, MAPPA Serious Case Reviews)*



	<ul style="list-style-type: none"> ○ <i>Identify good practice and organisational learning for cascading in the most relevant format to the wider workforce.</i> ○ <i>Improve the quality of investigations and working practices that will provide better outcomes and increase the trust and confidence of the community in Warwickshire Police and our Statutory partners.</i>
--	---

Strategic Priority	What we did..
Prevention & Early Intervention	<ul style="list-style-type: none"> • Warwickshire introduced new Early Help Pathway Assessment to make it easier for practitioners to complete the Early Help Assessment with families in line the new Restorative Practice approach. • Warwickshire has developed a stepped approach to Early Help services. This means that families and practitioners can identify what support is available to them at the level that best meets their needs. The help offered to a family can range from signposting to an informative website, right through to working with the family to complete an assessment called the Early Help Pathway to Change Plan. This helps ensure that families receive support from the right service at the right time.

Strategic Priority	What we did..
Exploitation	<ul style="list-style-type: none"> • Warwickshire Safeguarding has integrated the safeguarding arrangements for children and adults within a single governance model which enables the operational arrangements on the ground to be integrated. Under the new arrangements an all age Exploitation Sub Group was created to provide strategic oversight in relation to the protection of children and adults from harm as a result of criminal and sexual exploitation and abuse, people trafficking, modern slavery and children missing from home, school and care. • The Executive Board decided that the theme of Exploitation would be the subject of the partnership's first strategic thematic review. • Warwickshire commissioned Research in Practice to support the development of Warwickshire Safeguarding's new 'Exploitation Strategy'. Two workshops were held which involved partner representation from across



Warwickshire's Public, Voluntary and Community sectors the learning gathered from these is helping to inform the new strategy and work plan moving forward.

- Warwickshire has established a dedicated multi agency Child Exploitation Team (CET) which includes members from Warwickshire Police, Social Care & Barnardo's and have a campaign called "Somethings Not Right" which is a positive and well-regarded campaign raising awareness around child exploitation.
- New strategic arrangements have increased partnership working between the exploitation team with Youth Justice, voluntary organisation ROSA who provide victims with counselling and three Cyber Crime Advisors.
- The CCG has worked closely with the missing from education team to identify those young people most at risk.
- Warwickshire continued to support victims of modern slavery and human trafficking. During 2019-2020 **a total of 110 referrals were made into the National Referral Mechanism (NRM)**. This is a framework for identifying and referring potential victims of modern slavery and human trafficking and ensuring they receive the appropriate support. The breakdown of this total number is:
 - **89** Child referrals
 - **21** Adult referrals
- A total of **250 child cases of Child Sexual Exploitation and 32 human trafficking cases** were supported through the safeguarding partnership and a total of 2 adult safeguarding cases related to modern slavery were concluded under s42 Enquiries, as per the criteria in the Care Act 2014.
- A total of **15 County Lines have been identified as operating across Warwickshire**. Work continues to increase awareness of this issue and finding ways to combat the problem working with safeguarding partners from across neighbouring local authority areas and partners from within Warwickshire.

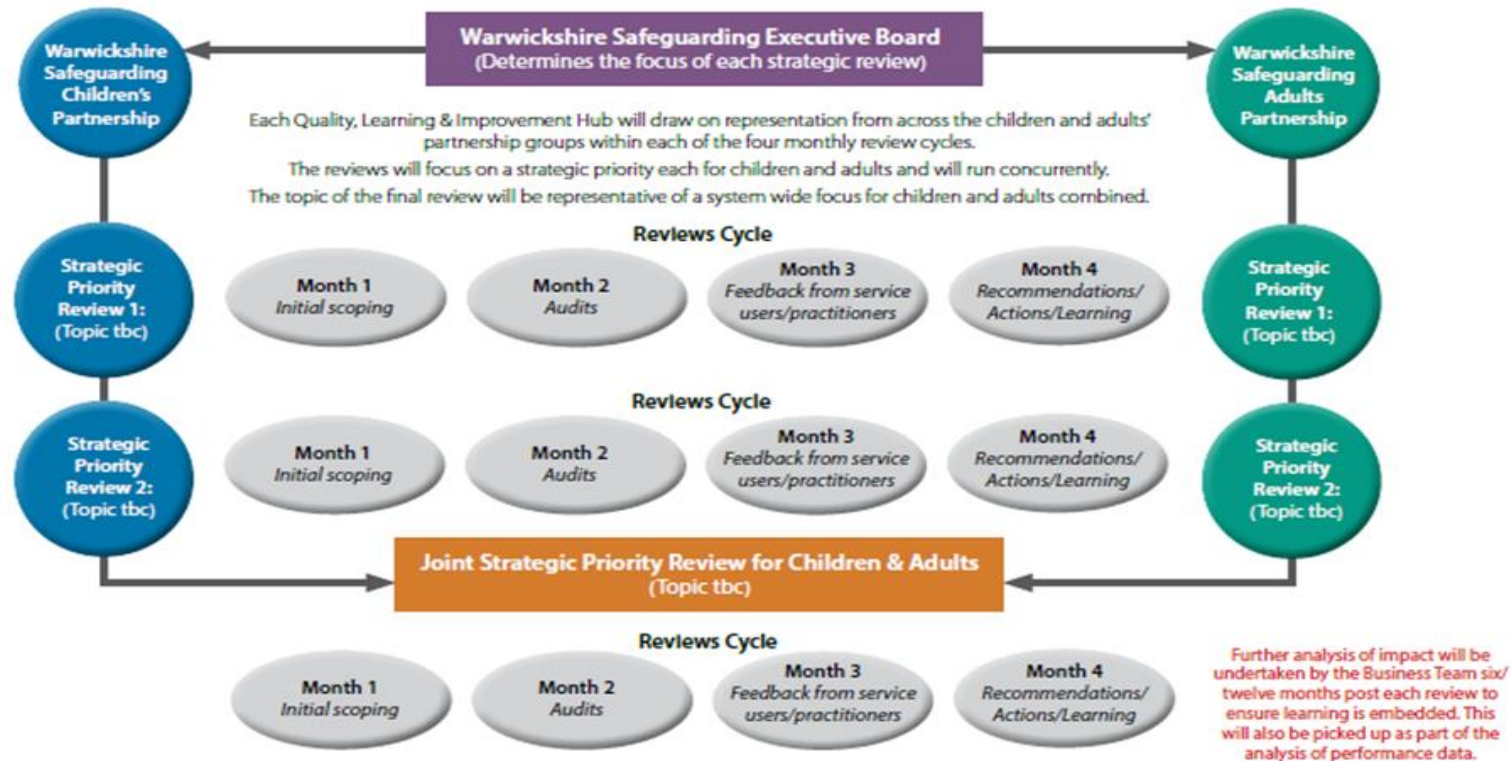
Quality Assurance Framework

As part of its new ways of working, Warwickshire Safeguarding implemented a new Quality Assurance Framework (*see illustration below*) introducing quality learning and improvement hubs to provide independent scrutiny and assurance of safeguarding practices being adopted across the partnership. A series of tools were developed to support single agency self-evaluations, case file audits, professionals' surveys and conversations with professionals and service users.



Warwickshire Safeguarding Quality Learning and Improvement Hubs

(Designed to drive the delivery of the Quality Learning and Improvement Framework. The hubs will be convened to examine a range of information from a variety of sources relating to multi-agency practice issues aligned to one of the safeguarding Board's strategic priorities for Children or Adults)

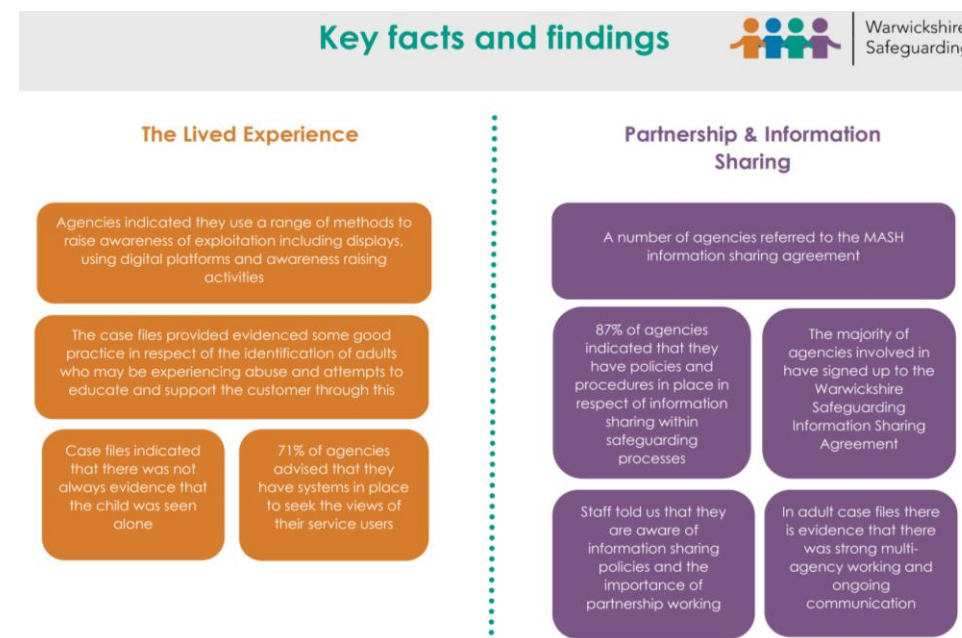
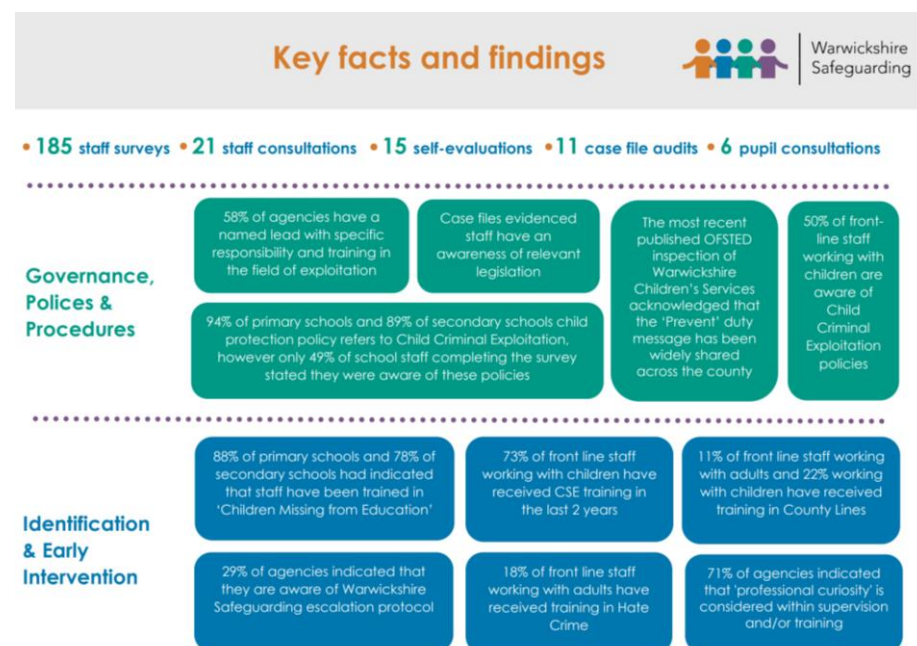


The key lines of enquiry for each thematic review will look to scrutinise the effectiveness of practice across the following four key areas:

- Governance, Policies & Procedures
- Identification & Early Intervention
- The Lived Experience
- Partnership & Information Sharing



Warwickshire Safeguarding Executive Board (WSEB) determined that the focus of the first thematic review would be 'The Exploitation of Children and Adults', in line with the partnership's strategic priorities. This thematic review was completed in January 2020 and the final full report and an executive summary of the findings were published on the website. The report captured learning identified from single agency self-evaluations, case file audits, professionals' surveys, conversations with professionals and service users. This proved to be a very insightful and valuable exercise which helped the partnership to consider successes and challenges, identify learning, make suggestions and recommendations for improvements, both at multi-agency and single agency levels. Detailed below are some of the key findings from this thematic review:



The responsibility for the delivery and oversight of the multi-agency summary action plan developed in response to this thematic review sits with the Exploitation Subgroup, who provide WSEB with regular updates on performance against these actions.



Learning and Improvement

Over the course of 2019-2020 Warwickshire Safeguarding introduced a number of new initiatives to help to improve the pace of learning and improvement across the safeguarding agenda for both adults and children, young people and families. Provided below are the details of how this has been achieved.

Safeguarding Reviews

Adults	Children
<p><i>The Care Act 2014 places a statutory duty on local Safeguarding Adults Boards (SABs) to arrange Safeguarding Adults Reviews (SARs)</i></p> <ul style="list-style-type: none"><i>• When an adult, with needs for care and support, (whether or not the local authority was meeting any of those needs) in its area dies as a result of abuse or neglect, whether known or suspected, and there is concern that partner agencies could have worked more effectively to protect the adult; OR</i><i>• If an adult in its area has not died, but the SAB knows or suspects that the adult has experienced serious abuse or neglect and there is concern that partner agencies could have worked more effectively to protect the adult. 'Serious Abuse' is considered to be life threatening which requires intervention to prevent death and/or where there is significant psychological impact of the abuse on the individual.</i>	<p><i>The Children and Social Work Act 2017 places a duty on safeguarding partners to make arrangements to identify and review serious child safeguarding cases which, in their view, raise issues of importance in relation to their area. They must commission and oversee the review of those cases, where they consider it appropriate for a review to be undertaken.</i></p> <p><i>Serious child safeguarding cases are those in which:</i></p> <ul style="list-style-type: none"><i>• Abuse or neglect of a child is known or suspected; and</i><i>• The child has died or been seriously harmed.</i> <p><i>Serious harm includes (but is not limited to) serious and/or long-term impairment of a child's mental health or intellectual, emotional, social or behavioural development. It should also cover impairment of physical health.</i></p>

Warwickshire Safeguarding has continued to receive a high volume of referrals from across the partnership in respect of both adults and children's cases where the referrer considers the circumstances of the abuse or neglect caused to the individual could have potentially been managed differently and where lessons can be learned and improvements to practices identified and implemented.



Working Together 2018 introduced a new requirement for undertaking Rapid Reviews. The aim of the rapid review being to enable safeguarding partners to:

- *Gather the facts about the case, as far as they can be readily established at the time*
- *Discuss whether there is any immediate action needed to ensure children's safety and share any learning appropriately*
- *Consider the potential for identifying improvements to safeguard and promote the welfare of children; and*
- *Decide what steps they should take next, including whether or not to undertake a child safeguarding practice review.*

Warwickshire Safeguarding decided to extend this process to the management and overview of safeguarding adult's referrals to ensure a consistent approach to the consideration of Safeguarding Adults Review referrals.

Warwickshire Safeguarding's Safeguarding Reviews Subgroup is responsible for ensuring that Safeguarding Adult Reviews and Local Child Safeguarding Practice Reviews in Warwickshire are carried out appropriately and effectively so that issues and lessons are identified, disseminated and acted upon.

The table below provides an overview of the number of safeguarding reviews referrals received during 2019-2020 and how many of these converted into formal reviews, or progressed as alternative learning reviews:

Safeguarding Adults Reviews (SARs)	Serious Case Reviews (SCRs) / Child Safeguarding Practice Reviews (CSPRs)
<i>No. of referrals received = 11</i>	<i>No. of referrals received = 10</i>
<i>No. of Rapid Reviews conducted = 8</i>	<i>No. of Rapid Reviews conducted = 6</i>
<i>No. of referrals progressed as a full review = 1, plus 1 joint with Children's</i>	<i>No. of referrals progressed as a full review = 2, plus 1 joint with adults</i>
<i>No. of referrals progressed as alternative learning reviews = Nil</i>	<i>No. of referrals progressed as alternative learning reviews = 2</i>
<i>Types of abuse reported in referrals = Organisation Abuse, Self-Neglect and Physical Abuse</i>	<i>Types of abuse reported in referrals = Organisational Abuse, Neglect, Sexual Abuse, Physical Abuse, Exploitation</i>
<i>No. of reports published = Nil</i>	<i>No. of reports published = 2 (Amy and Child:K)</i>
<i>No. of lessons learned briefings published = 3 (Rose, Noel and Chris)</i>	<i>No. of lessons learned briefings published = 1 (Amy)</i>

Alternative Learning Reviews

Warwickshire Safeguarding conducted two alternative learning reviews for cases which did not meet the statutory criteria for a Child Safeguarding Practice Review however, presented areas of key learning which would benefit partner organisations working with children in similar circumstances in the future. Partner agencies were invited to participate in tabletop reviews to identify any learning or improvements to practice in order to better safeguard children and young people with a focus on the following topics:

- *Communications*
- *Information Sharing*
- *MASH Processes*
- *The Voice of the Child*
- *Escalations*
- *Partnership Working*

Joint Learning Events across Children and Adults (AMY)

To reflect its new ways of working, Warwickshire Safeguarding introduced opportunities for reviewing safeguarding review referrals which offered cross cutting learning across the children's and adults partnership landscape. In March 2019 a joint learning event was commissioned to provide the partnership with the reassurance that if given a similar set of circumstance the current response from the relevant services would be robust enough to prevent a similarly poor outcome for the child and family concerned.

The case of AMY highlighted a number of failings in terms of:

- *Recognising and respond to the issue of coercive and controlling behaviour*
- *Putting the child first*
- *Recognising anger as an appropriate and healthy response to trauma*
- *Providing effective advocacy for children*

Agencies were asked to focus on the frequently faced challenge of controlling and coercive men joining vulnerable families. Amy's voice was captured as part of the learning event through statements provided by her during a visit to her home by the Independent Reviewer and Business

Manager. This provided a powerful presentation of her own feelings about the way agencies managed her safeguarding situation and how this could be improved when dealing with similar cases in the future.

Although Adult Social Care were not directly involved in this case, it provided an opportunity for them to identify learning from this case that could be applied to the services they deliver.

Both the full report and Lessons Learned Briefing were published on Warwickshire Safeguarding's website and cascaded to the wider partnership to support improvement in practice.

Lessons Learned Briefings

Warwickshire Safeguarding introduced new Lessons Learned Briefings to help improve the communication of lessons being drawn from safeguarding reviews, which help to ensure the learning is being shared widely and more rapidly so that it can impact positively on future case management. These are produced following the completion of a Local Child Safeguarding Practice Review (LCSPR) or a Safeguarding Adults Review (SAR), or in those cases where the criteria for a formal review was not met however; the initial scoping process identified key areas of practice which highlighted the need to promote awareness.

The Lessons Learned briefings are structured to provide a summary overview of the story of the child or adult, what we learned and advice for professionals and the community. During the course of 2019-2020 Warwickshire Safeguarding published the following 4 Lessons Learned Briefings on its website:

- *Rose (Adult)*
- *Noel (Adult)*
- *Chris (Adult)*
- *Amy (Child)*

7 Minute Briefings

In order to encourage continuous learning and maintain a skilled workforce, Warwickshire Safeguarding introduced 7-Minute Briefings as a quick and simple way to share learning on a range of safeguarding topics. These are often related to areas of key learning identified through reviews work, or

the introduction of new changes to local/national policy, procedures and practice. The briefings act as a catalyst to help teams and their managers to discuss and reflect on their practice and systems.

Warwickshire Safeguarding encourages all agencies to record or evidence how they have used the 7-Minute Briefings on the 7-Minute Briefing Action Plan Template, which will be reviewed as part of Warwickshire Safeguarding's regular quality assurance audits. During 2019-2020 Warwickshire Safeguarding published briefings on the following topics:

- *Joint Target Area Inspections (JTAI)*
- *Local Child Safeguarding Practice Reviews*
- *New Partnership Arrangements - Warwickshire Safeguarding*
- *Rapid Reviews*
- *Children moving across Local Authority boundaries*
- *Financial and material abuse*
- *Reporting an adult safeguarding concern*
- *Role of Special Guardians*
- *Safeguarding Adult Review (SAR)*
- *Section 42 Adult Safeguarding Enquiry*

Schools Annual Audit – 2018/2019

Warwickshire schools/education settings completed their annual audit of their safeguarding arrangements to enable the partnership to gather structured information to facilitate effective monitoring of safeguarding practice in the education sector. As part of the 2018/2019 academic year, **280** schools/education settings submitted a return of their safeguarding audit. Initial analysis of the returns has provided the following overview of findings:

- *There was evidence of significant progress in arrangements for DSLs to receive reflective supervision*
- *The audit provided an encouraging picture of movement towards more trauma informed practice in response to children's behaviour in most schools/settings.*
- *A number of primary schools highlighted the lack of suitable curriculum materials for engaging children about issues such as exploitation, grooming and radicalisation.*



- *There is growing evidence from successive audits of increasingly robust governance arrangements in relation to safeguarding. However, this audit highlighted vulnerability when there are changes of governance arrangements including moves to multi-academy trusts, federations, de-federating, temporary governance arrangements and departure of experienced governors.*
- *The audit highlighted that a great deal more work was needed to raise the education sector's awareness of child criminal exploitation.*
- *The number of reported uses of the escalation process was surprisingly very low. Warwickshire Safeguarding should monitor closely whether its updated escalation process improves the recorded evidence of the process being used.*
- *Self-harm in education settings is clearly a safeguarding issue. This was the first year that the audit included questions about self-harm. The overall number of incidents was high but again a large number of schools reported no incidents at all, which could suggest the need for greater vigilance and reporting and more robust recording.*
- *Another theme was children's mental health and self-harm and the associated challenges of ensuring that teachers and other staff working directly with children are confident and equipped to deal with children experiencing these difficulties and to support other children who may witness distressing incidents.*
- *There were many references to the expectations upon schools and education settings to safeguard children from serious risks such as domestic abuse, homelessness and parental mental ill-health and drug misuse by means of early help, often without engagement by services working with adults in respect of those issues.*

Voice of the Adult/Child

MSP

Making Safeguarding Personal requires agencies to ask individuals and/or their representatives what outcomes they would like to achieve from their safeguarding intervention. During the course of 2019-2020 Warwickshire concluded **284** s42 safeguarding enquiries of these **184** individuals/their representatives were asked for their views and desired outcomes, out of which

- **178** individuals/their representatives **expressed their views and desired outcomes**
- **6** individuals/their representatives **did not wish to express their views and desired outcomes**
- **100** of the concluded s42 enquires recorded that **the individual's outcomes had been fully achieved**



- **69** of the concluded s42 enquiries recorded that **the individual's outcomes had been partially achieved**
- **9** of the concluded s42 enquiries recorded that **the individual's outcomes had not been achieved**

Advocacy Support/Views of the Child

local authorities have a duty to arrange for an independent advocate to be available to represent and support certain persons (Children and adults) for the purpose of facilitating those persons' involvement in the exercise of functions by local authorities. Advocacy is a process of supporting and enabling people to:

- *Express their views and concerns*
- *Access information and services*
- *Defend and promote their rights and responsibilities; and*
- *Explore choices and options*

During 2019-2020 a total of **52 adults with care and support needs** were supported by an advocate to help them with their safeguarding issues.

A further **197 referrals for Children's Advocacy** service were supported by Barnardo's which involved:

- *going to meetings with a young person where decisions are made – for example, meetings about foster placements*
- *writing letters on their behalf*
- *helping to get all the information the young person might need and help them understand what their rights are*

Partnership Funding

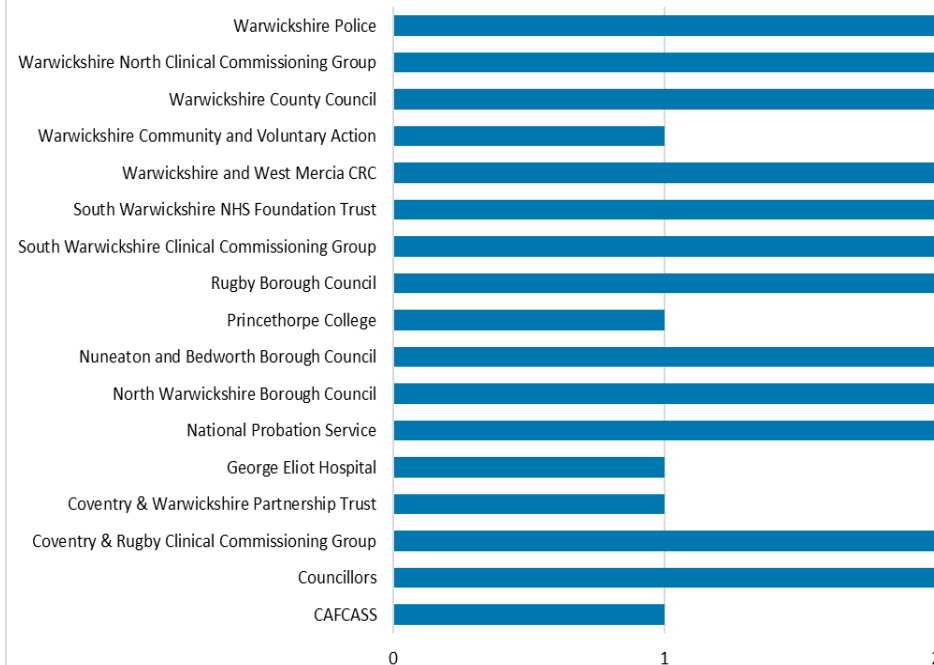
Warwickshire Safeguarding has been funded through a pooled budget from across the partnership including the County Council, District and Borough Councils, CCGs, Police and others which covers all aspects of the partnership's work and commitments, including the cost of the Business Team, commissioning of independent reviewers for safeguarding reviews, maintenance of procedures platforms and website development. The budget for 2019-20 was £371,161.



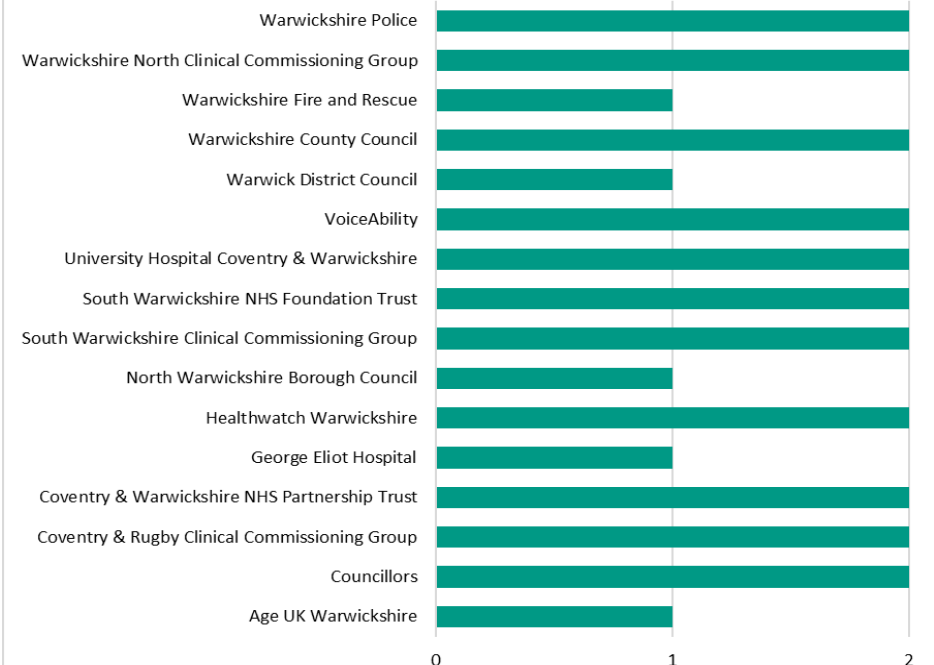
Member Attendance

The following tables provide an illustration of partners' attendance at meetings throughout 2019-2020. During April to July 2019, the partnership operated under the former governance of two separate safeguarding boards namely Warwickshire Safeguarding Children's Boards and Warwickshire Safeguarding Adults Board. The first two tables below illustrate member attendance at either of these two former boards. The third table provides an illustration of partner attendance under the new Warwickshire Safeguarding governance structures which came into effect from 29 September 2019.

**WSCB Membership Attendance
April - July 2019**

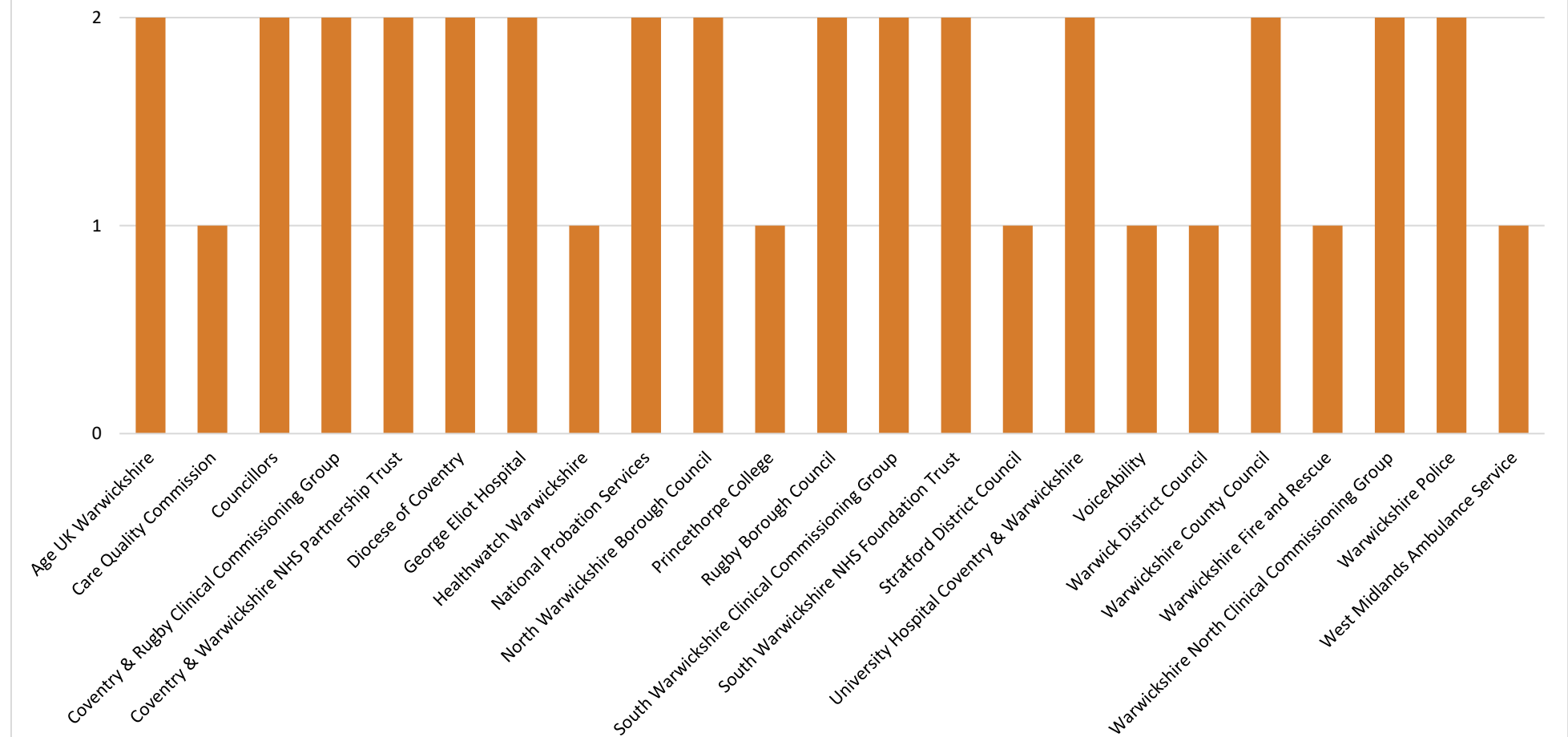


**WSAB Membership Attendance
April - July 2019**





Warwickshire Safeguarding Membership Attendance Sept 2019 - March 2020





Conclusion

In conclusion, this report demonstrates the continued development and increased awareness of safeguarding children and safeguarding adults' issues within the partnership. The year has provided an opportunity to develop the innovative new arrangements currently being introduced which has supported Warwickshire Safeguarding's 'Think Family' approach.

Warwickshire Safeguarding has continued to respond to the rapid national and local pace of change whilst maintaining focus on the delivery of its strategic priorities. A lot of groundwork has been undertaken to ensure the right infrastructures are in place to support the management of known and emerging safeguarding risks such as Modern Slavery, Human Trafficking, County Lines, Cuckooing and Domestic Violence . The partnership has opened itself to external challenge to ensure its approach to handling exploitation of children and adults is focused and deliverable.

The introduction of the new strategic thematic reviews as part of the partnership's new Quality Assurance Framework has enabled much broader partner engagement in assurance activities. The voice of the professionals working with vulnerable children and adults and the service users themselves has been a welcomed addition and has helped the partnership to understand the impact of its work, policy and practices from the frontline.

Moving forward, Warwickshire Safeguarding will continue to build on the work it has started in 2019-2020 and ensure new safeguarding practices are fully embedded and support the achievement of positive outcomes for children, young people and adults.



Warwickshire
Safeguarding



North Warwickshire
Borough Council



Police and Crime
Commissioner
Warwickshire



The Polesworth School
ENSURING EXCELLENCE

