



Welcome to the winter edition of the Warwickshire Safeguarding Children Board (WSCB) newsletter. Our aim is to keep you informed of local and national safeguarding news, updates on any changes to policies, and new learning and improvement we want to share with all multi-agencies working with children and families in Warwickshire.

If you have any comments or suggestions about the newsletter, please email wscb@warwickshire.gov.uk

In this issue:

- Industry news - pages 1 – 3
- Local news which includes:
 - Working Together to Safeguard Children 2018
 - New procedures for Serious Case Reviews
 - New reports that have been published
 - Think Family
 - Learning and improvement

Industry News

Childhood Neglect

The NSPCC have published information relating to the number of people contacting its helpline who have concerns about child neglect. In 2017/2018, the NSPCC have reported that they responded to nearly 20,000 contacts (calls or emails) and nearly 600 of these were during the 12 days of the Christmas period.

Neglect is the most common type of abuse affecting children in the UK. It is one of the four key strategic priorities for WSCB; further to learning gathered directly from our serious case reviews.

To access the NSPCC findings including recognising key signs of neglect, please [click here](#).



Adverse Childhood Experiences (ACEs)

ACEs are highly stressful, traumatic events that affect children whilst growing up, such as suffering child maltreatment or living in a household affected by domestic violence, substance misuse or mental illness.

A short film has been produced by Public Health Wales and Blackburn with Darwen local authority. The film has been developed to raise awareness of ACEs, their potential to damage health through the course of life; not just emotionally but physically too. It also highlights and is a useful reminder of how we can all play a part in preventing ACEs and supporting those affected by them, through multi-agency working.

To access the film, [click here](#).



<http://www.aces.me.uk/in-england/>



County Lines – [new guidance](#) published by the Home Office

Criminal exploitation of children and vulnerable adults is a geographically widespread form of harm that is a typical feature of county lines.

The Home Office have produced updated guidance outlining what county lines is, signs to look for and what to do about it alongside existing safeguarding policies within each local authority. The guidance is primarily aimed at frontline staff who work with children, young people and potentially vulnerable adults. This includes professionals working in education, health, housing, benefits, law enforcement (police) and related partner organisations.

The UK Government definition of County Lines:

‘County lines is a term used to describe gangs and organised criminal networks involved in exporting illegal drugs into one or more importing areas within the UK, using dedicated mobile phone lines or other forms of “deal line”. They are likely to exploit children and vulnerable adults to move and store the drugs and money and they will often use coercion, intimidation, violence (including sexual violence) and weapons.’

County lines activity and the associated violence, drug dealing and exploitation has a devastating impact on young people, vulnerable adults and local communities. For safeguarding policies here in Warwickshire on criminal exploitation including County Lines, please refer to our [Interagency procedures](#). To access the Home Office guidance, please [click here](#).

Modern Day Slavery & Trafficking

A report has been published by the [Home Office](#) on modern day slavery in the UK. The report highlights that in 2017, there were 5,143 potential victims referred to the National Referral Mechanism (NRM), a 35% increase from 2016, of which 2,121 were children (41%).

At the same time, [Europol](#) published a report on child trafficking in the EU during 2015-2017. The report found that traffickers in the EU target underage victims mainly for sexual exploitation; trafficking of male children especially for sexual exploitation remains under-reported and the majority of non-EU networks reported to Europol involved Nigerian organised crime groups trafficking female children and women to be sexually exploited.

The NRM is used to identify and record victims of trafficking, ensuring that they are provided with appropriate support in the UK. To access WSCB procedures, click on [modern day slavery](#), [trafficking](#) including the [NRM](#).

A report by the Children’s Commissioner for England – [‘Are they shouting because of me?’](#)

The Children’s Commissioner published a report earlier in the year highlighting the voice of children living in households with domestic abuse parental substance misuse and mental health.

The report, ‘Are they shouting because of me?’ provides an insight into the daily lives of children, what it was like to live in these households. The report highlights how open the children were, sharing how it affected their emotional wellbeing, school life and relationships with friends, and the ways in which they attempted to cope. Yet despite this, they knew that the alternative without their parents would be painful and often went to great lengths not to tell others for fear of being separated, and how much they loved and trusted their parents.

The report clearly shows how the children were torn between loyalty and love, and the need to seek help.

To read the report in full here, [click here](#).



Domestic Abuse – the impact upon children

The [Home Affairs Committee](#) have published [a report](#) further to their enquiry into the government's proposal for their domestic abuse strategy and draft bill on domestic abuse.

As part of their enquiry, evidence was gathered from a range of organisations (statutory and support services) and individuals. The evidence highlighted the complexity of tackling domestic abuse, the wide variety of influences on the behaviour of perpetrators, and the range of support needed to help victims and their families leave the abuse and recover from their experiences.

A key recommendation by the Home Affairs Committee is the recognition of the impact that domestic abuse has upon children; that this is explicitly recognised in the legislation and that the government must develop a clear strategy to ensure adequate protection and support. Recommended measures include protected status on waiting lists for NHS services, including child and adolescent mental health services, and legal obligations on local authorities to provide a new school place when requested by a family house in a refuge.

One in five children* in the UK have experienced domestic violence by the age of 18 years; recognised as a significant and social issue, domestic abuse has serious, long-term consequences for children.

Section 2 of WSCB [Interagency procedures](#) includes further procedural guidance about domestic abuse, with additional information on the Safe in Warwickshire Partnership Board website, [safe in warwickshire](#).

[*Humphreys and Bradbury-Jones 2015](#)

Carers Rights Day – 30th November 2018

The Carers Trust UK estimates that 1 in 8 workers are unpaid carers for a loved one, friend or neighbour. This could include people with physical or learning disabilities, dementia, mental health problems or terminal illness.

Carers Rights Day are organised to:

- *Make carers aware of their rights*
- *Let carers know where to get help and support*
- *Raise awareness of the needs of carers*

But it's not just adults who are carers. Carers Trust also hold a Young Carers Awareness Day to identify and raise awareness of the 700,000 young carers across the UK who are caring for a sick or disabled family member. Their aim is to raise awareness resulting in the young carers getting the support that they need.

For Young Carers Awareness Day 2018, Carers Trust carried out a snapshot survey which showed that many 5 – 10 year olds, known as infant young carers, are getting up at night to care for a sick family member (there are around 10,000 infant young carers):

- *46% are getting up in the night to care for family members, missing out on their own sleep.*
- *More than 80% are carrying out caring duties every day or most days of the week.*
- *1 in 10 young carers go the shops unaccompanied to buy essentials for the family.*
- *Three quarters of these children are providing emotional support by cheering up family members when they are sad.*

To find out more, click [Carers Rights Day](#) and the forthcoming [Young Carers Awareness Day in 2019](#).

Over the past year, WSCB have added news stories to the website about young carers; click both links below to access.

[Young carers – summer holidays](#)
[Health and wellbeing of young carers](#)



Local News

Working Together to Safeguard Children 2018 – new statutory safeguarding guidance

In July 2018 the Department for Education (DfE) issued revised statutory safeguarding guidance, **Working Together to Safeguard Children 2018**. This statutory guidance details what practitioners, agencies and organisations must do, individually and collectively, to safeguard children. It sets out how multi-agencies should work together fulfilling this responsibility, including taking a child-centred and coordinated approach to safeguarding.

The statutory guidance had to be revised due to legislative changes introduced through the Children and Social Work Act 2017. The Act significantly creates new duties for the local authority, clinical commissioning groups and police; they are under a duty to make arrangements to work together, and with other partners locally, to safeguard and promote the welfare of all children in their area. Key changes include reforming the arrangements for multi-agency safeguarding, serious case reviews and Child Death Reviews. The three safeguarding partners (local authority, clinical commissioning groups and police) are now required to set out their arrangements locally. The new arrangements must be published by June 2019 and implemented by September 2019.

During this period, transitional statutory guidance has also been produced to support Local Safeguarding Children Boards (LSCBs), the new safeguarding and child death review partners, and the new Child Safeguarding Practice Review Panel move towards the new system of multi-agency arrangements, local and national child safeguarding practice reviews.

What is happening in Warwickshire?

Collaborative meetings have been taking place over the past few months between the Strategic Lead partners (Police, LA and Health). A draft proposal of the new local arrangements was presented to wider WSCB board members on 22nd November. Until the new working arrangements have been published and implemented, WSCB must continue to fulfil its statutory function, therefore all agencies must continue to follow the safeguarding procedures as outlined within [Interagency Procedures](#) on the [safeguardingwarwickshire](#) website.

Have any changes to safeguarding procedures already been made?

Yes. An independent panel, the new Child Safeguarding Practice Review Panel began operating from June 2018. The panel are responsible for reviewing serious child safeguarding cases (serious case reviews) which raise issues and themes that are complex or of national importance. It will look at what could be done differently to improve the protection and welfare of children, and what implications these cases have on current and future policy. This has meant that WSCB has updated its serious case review procedures, for more details about this please refer to page 5 of this newsletter.

When will the new local safeguarding arrangements for Warwickshire be implemented by?

LSCBs are required to publish their new partnership arrangements by, or before 29th June 2019 and these should be implemented by/before 29th September 2019.

To access the new Working Together to Safeguard Children 2018 guidance, please [click here](#).



New Procedures – Serious Case Reviews

In line with the new Working Together 2018 statutory guidance, WSCB have implemented new procedures in relation to serious safeguarding incidents/serious case reviews.

A serious child safeguarding case are those in which:

1. Abuse or neglect of a child is known or suspected?
2. The child has died? OR
3. Has the child been seriously harmed? AND
4. Is there cause for concern as to the way in which the authority, their Board partners or other relevant persons have worked together to safeguard the child?

'Serious harm' is defined in Working Together to Safeguard Children and includes (but is not limited to) serious **and/or** long-term impairment of a child's mental health, intellectual, emotional, social or behavioural development. It should also cover impairment of physical health.

New procedure

The revised statutory procedures now stipulate that WSCB and partners will have approximately **15 working days** to gather further information, from the initial referral, to complete a **Rapid Review** of the case. Due to the timescales that are now involved, all referrals for a serious case review or local case review must be sent to the following email address along with the SCR Referral Form: scrnotification@warwickshire.gov.uk.

Please attach the [SCR Referral form](#) to the e-mail.

WSCB will endeavour to acknowledge the referral for a serious case review/local case review within 2 working days.

Further information will be added to the Interagency Safeguarding Procedures on the website in due course.

Staff within an organisation who think they have identified a case for review should consult with their case review lead who will decide whether to or not refer it to WSCB.

New reports that have been published in Warwickshire

[Child Death Overview Panel \(CDOP\) Annual Report 2017-2018](#)

CDOP provides a systematic review of the deaths for all children who die in England aged between birth and the day prior to their eighteenth birthday. This report explores the statistical and qualitative conclusions gathered from panels in Warwickshire, Coventry and Solihull, highlighting the regional learning and actions taken as a result of child death.



[Director of Public Health Annual Report 2018](#)

[Eat, Sleep, Selfie, Repeat – Growing up in Warwickshire with Social Media](#)

The role of the Director of Public Health is to be an independent advocate for the health of the people of this county.

Directors of Public Health have a statutory requirement to write an annual report on the health of their population. This year's report includes: an overview of the health and wellbeing of the Warwickshire population and provides a focus on the theme of this year's report; the effects of social media on young people in Warwickshire, together with information on progress with the 2017 recommendations.





Warwickshire Think Family - Protocol and Practice Guidance

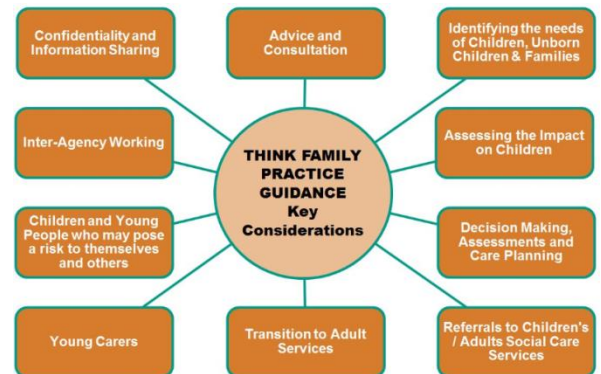
The Warwickshire [Think Family Protocol](#) is a joint commitment of the Warwickshire Safeguarding Children and Adults Board, promoting a 'Think Family' approach by all partner agencies.

Everyone has a responsibility to take a 'Think Family' approach in the context of safeguarding children and adults. Both boards recognise this to be a shared responsibility which must be at the heart of practice across all partner agencies working to support children or adults at risk of abuse and neglect in Warwickshire.

Practice guidance has been developed for practitioners and managers, supplementing Warwickshire's Think Family protocol. The practice guidance has been developed to help:

- Consider the needs for the family in key areas – see diagram
- Record and share relevant information, understanding its significance and take appropriate action

Further details about the Protocol and Practice guidance can be accessed via our website, safeguardingwarwickshire.



Faith Forums – Coventry and Warwickshire

WSCB are part of two Faith Forums, one in Coventry working alongside the Coventry Safeguarding Children Board and Warwick District.

Whilst it is not statutory requirement for WSCB to attend, it is through partnership working in such forums that we can raise awareness of safeguarding within the community including how to report concerns, awareness of the statutory services and roles, and key safeguarding priorities for the board.

Raising awareness of safeguarding within different faiths, particularly as many often provide their community of children and families with a lot of support, such as practical and financial, is important.

It is also another 'agency' that practitioners need to consider when working with children and families in need. If the family does have a faith, to consider what additional support they may be receiving or what information the faith group may have about the children and family.

Warwickshire Hate Crime Annual Report 2018

The Warwickshire Hate Crime Partnership has published their third annual report on hate crime in Warwickshire. The report explains what hate crime is, data about the number and type of offences across the county, shares the work and achievements by partner agencies and sets out future priorities for the year ahead.

To access the report in full, [click here](#).

For further information about Hate Crime, please access the safeinwarwickshire website.



REMINDER - change of email address for sending referrals to MASH



Please ensure that you are using the new email address for sending safeguarding referrals through to the MASH team:

mash@warwickshire.gov.uk



Learning and Improvement

Safe Recruitment, Selection and Retention for Staff and Volunteers

New learning has been gathered following a case that was reviewed by members of the Child Death Overview Panel (CDOP) for Warwickshire.

The learning highlighted the importance that **all agencies** must have with regard to the safer recruitment practice, which includes undertaking thorough pre-employment checks of potential employees. The review drew attention to the importance of vetting all new staff properly and in line with agreed Safe Recruitment, Selection and Retention for Staff and Volunteers in Warwickshire.

To access the procedures, click [Interagency procedures](#) (section 4) on the [safeguardingwarwickshire](#) website.



WSCB Multi-Agency Training Courses – up to 31/03/19

During our last training calendar year (01/04/17 – 31/03/18), 783 multi-agency practitioners accessed a WSCB training course with the demand continuing again this year which has been great news! This has meant that our training courses up until March 2019 are now full, even with adding further training dates to specific courses where we have experienced an increased demand.

At the time of distribution of this newsletter, WSCB are working to secure further training dates specifically for our 1 day - Responsibilities, Reporting and Responding to Child Sexual Exploitation (CSE). WSCB will advertise the training dates via our [safeguarding website news pages](#) once confirmed. Priority will be given to those delegates currently on waiting lists.

Once the new working arrangements for safeguarding in Warwickshire have been agreed and finalised by the safeguarding partners, the new training calendar including programme details for April 2019 – March 2020 will be published. WSCB will advise all partners via our [safeguardingwarwickshire](#) website, when the new training courses and directory becomes available.

Serious Case Reviews/Local Case Reviews in Warwickshire

Any serious safeguarding child cases undertaken in Warwickshire, when published, are placed on our [safeguardingwarwickshire](#) website, under Case Reviews.

Key learning that has been identified through the case reviews are embedded within the WSCB multi-agency training courses or through forums such as this newsletter and our website [news](#) pages.



Warwickshire Safeguarding Adults Board will be publishing a series of 'Spotlight Features' each month, to highlight specific topics. This will include news articles, events, campaigns and information on certain safeguarding subjects. Each month provides opportunities for practitioners and the community across Warwickshire to heighten awareness and understanding of Safeguarding.

This month's feature is **Suicide Prevention and Loneliness**. To access Spotlight Features, [click here](#).